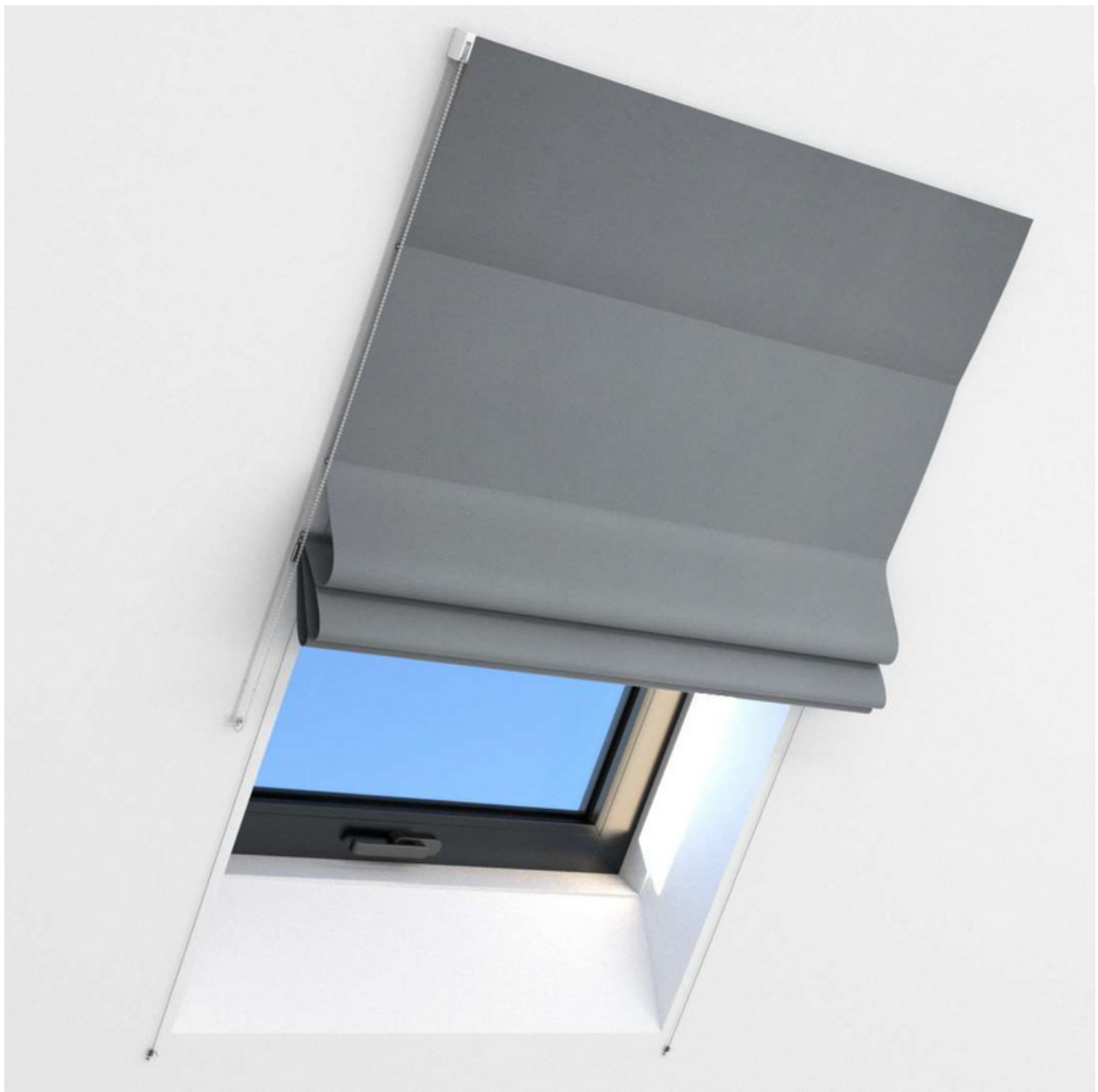
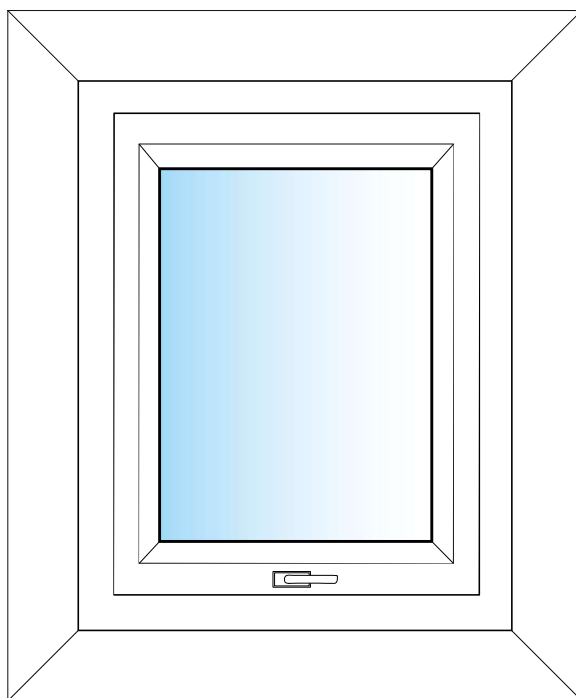


Measuring instruction of Roman blind for skylight windows.

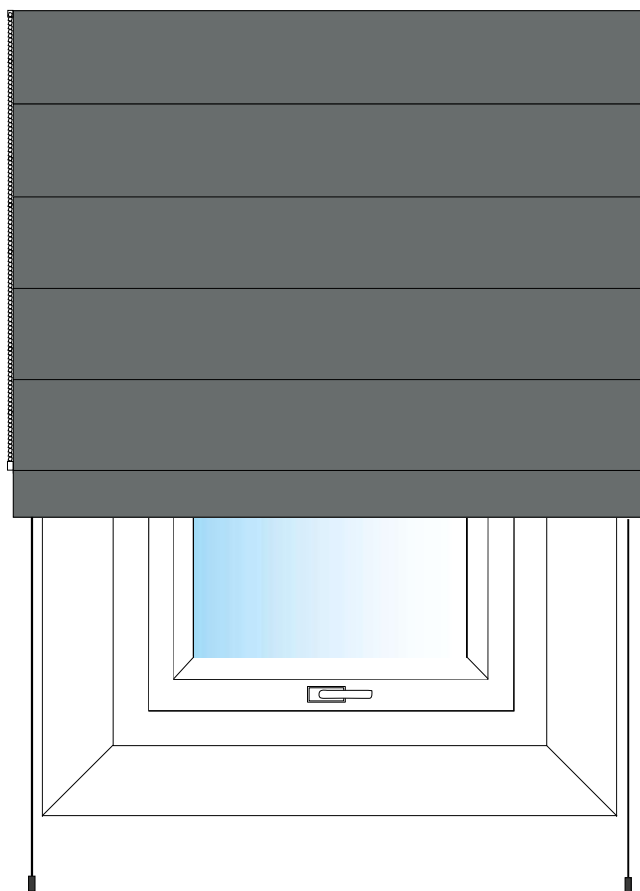
Mounting to the wall in front of the attic recess.



Skylight window before the installation

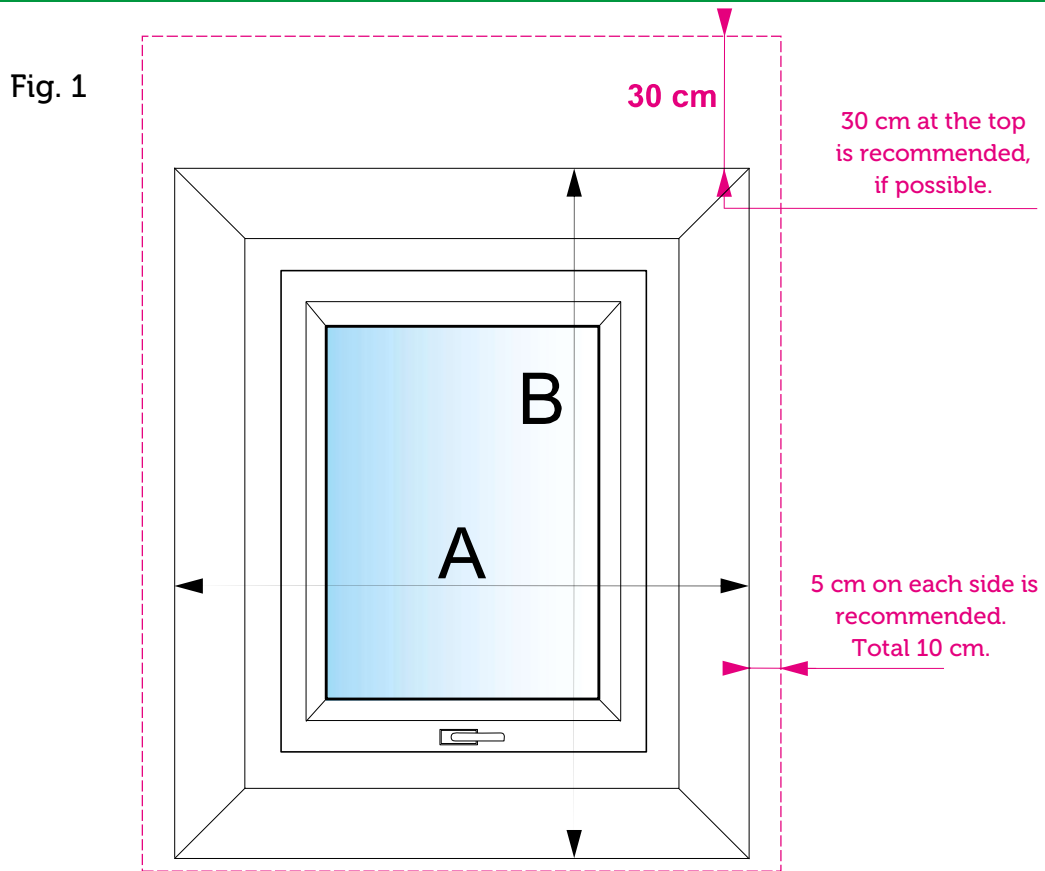


Skylight window after mounting the roman blind onto the wall on attic





Measurements are given in centimetres (cm).
You specify the width and the height of the fabric.
Keep in mind that the folded blind takes about 20 to 30 cm.
Horizontal stitching is spaced about 25 to 30 cm.



Measure the width and height of the window recess (wall opening).

Fig. 1

Enter the desired width, add the surplus of 5cm on the left and 5cm on the right side.

In total 10cm.

Example: A = 85 cm
 $85 + 10 = 95$ cm

Given the desired height, add 30 cm at the top and a few cm at the bottom - at your preference, e.g. 2 cm.

Total approx. 32 cm

Example: B = 143 cm
 $143 + 32 = 175$ cm