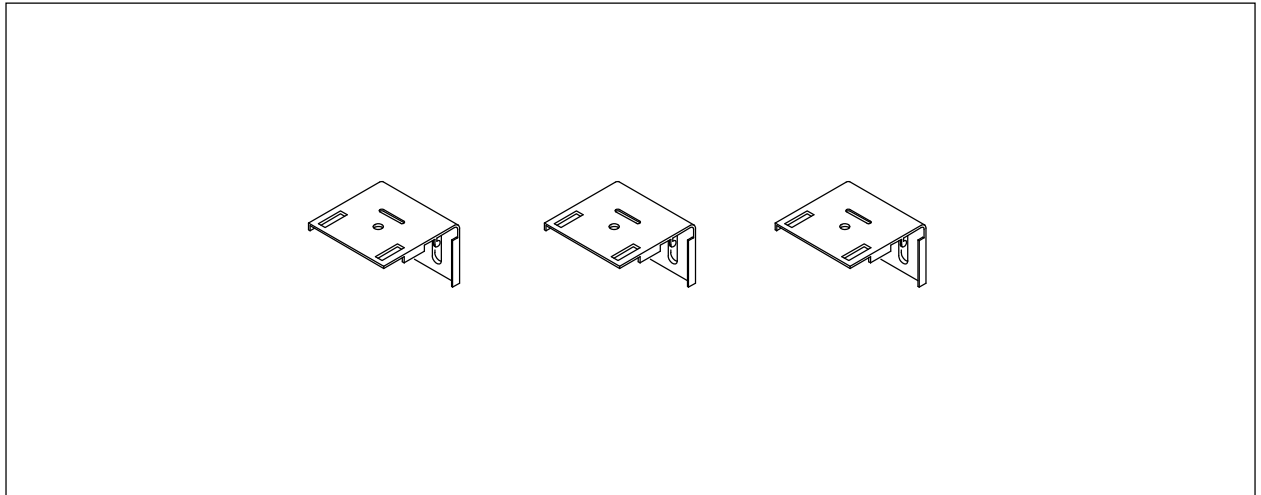


# Installation instructions for Premium Roman blinds mounted to the wall

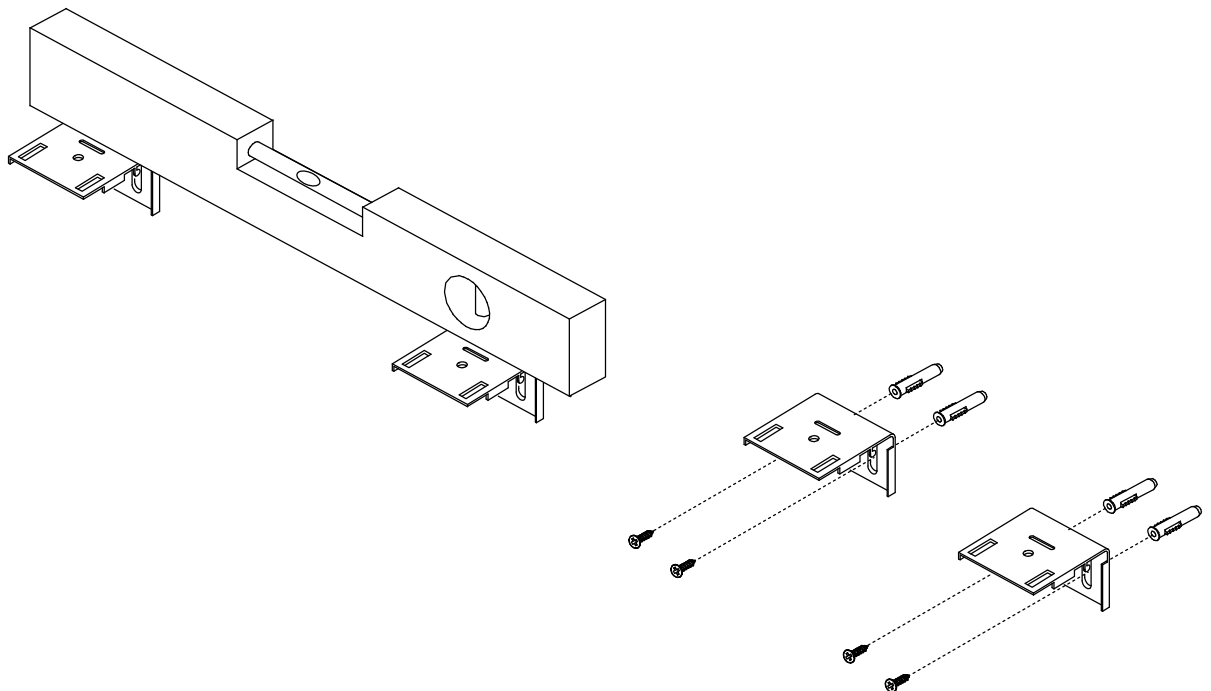


The following mounting hangers are supplied with the fabric roller blind. Their number depends on the width of the Roman blind. A minimum of 2 pieces, a maximum of 5 pieces. We do not provide the mounting pins. The type of pins depends on the material the walls are built of. The customer decides which pins to use.



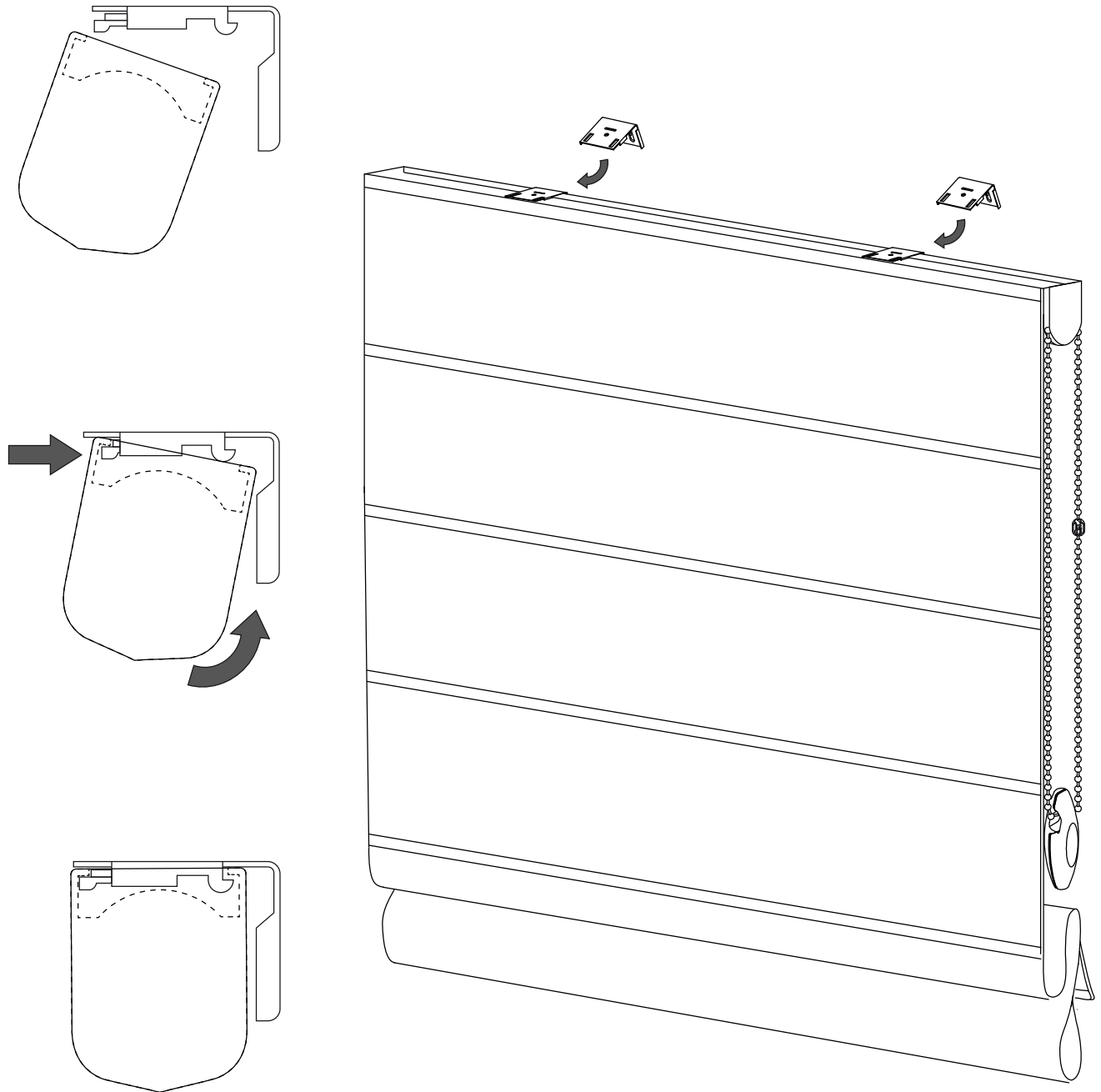
### Stage I

Mount the mounting hangers. The roller blind must be mounted perfectly horizontal for it to work properly.



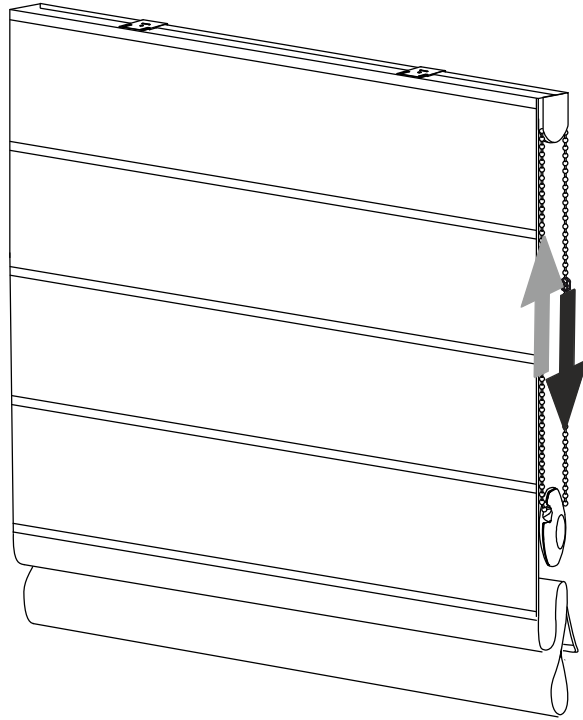
## Stage II

Attach a Roman blind to the mounting hangers. See the following 3 illustrations showing the order in which the blind is fitted in the hangers.



### Stage III

After mounting the blind in the hangers, check if the blind works properly by moving the chain up and down.



If the roller blind is crooked, most likely the string fell out of the guide during transport of the blind. Check if the strings are correctly positioned. Follow the illustration.

