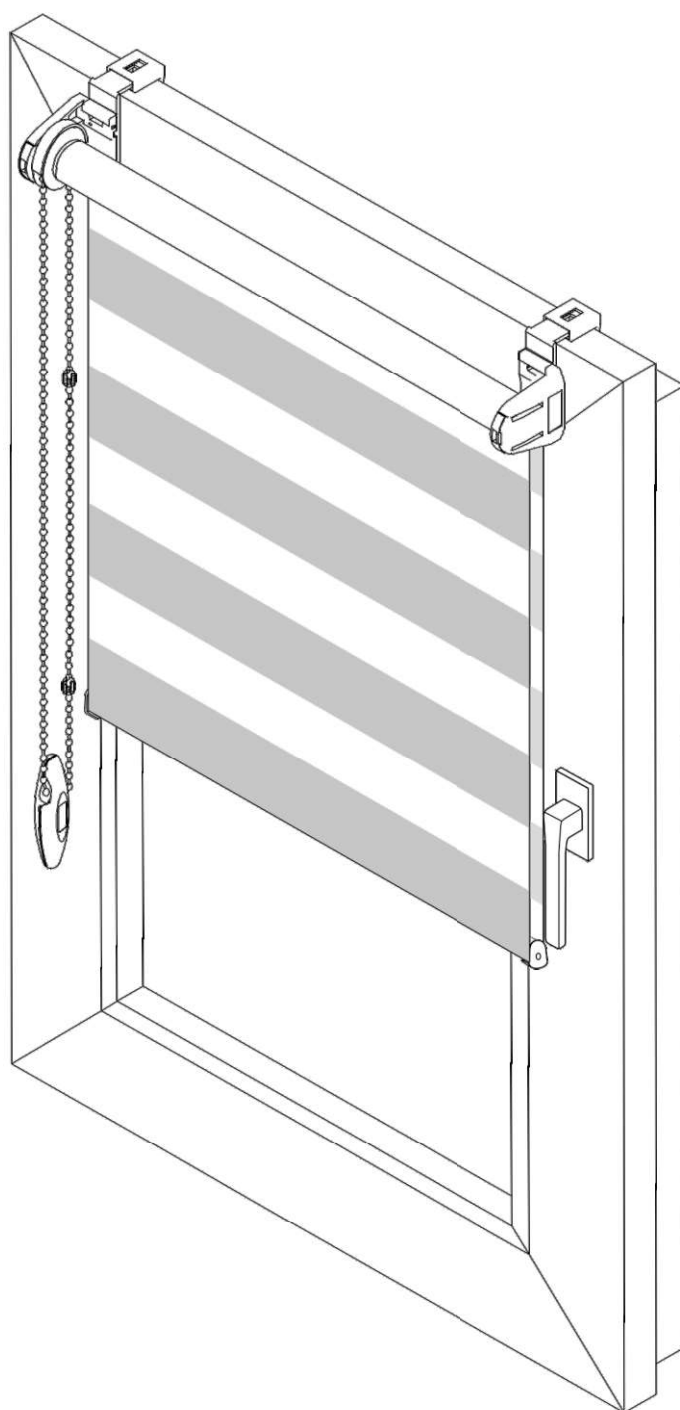
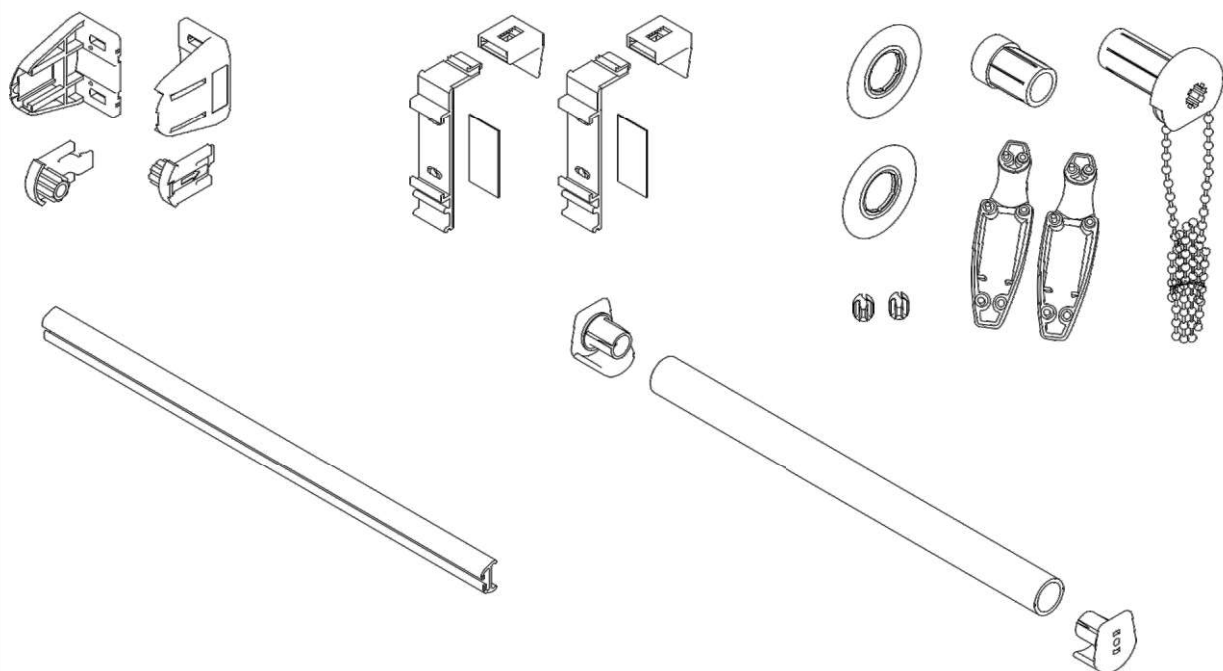


## Assembly instructions for Day and Night roller blinds mounted on the window frame

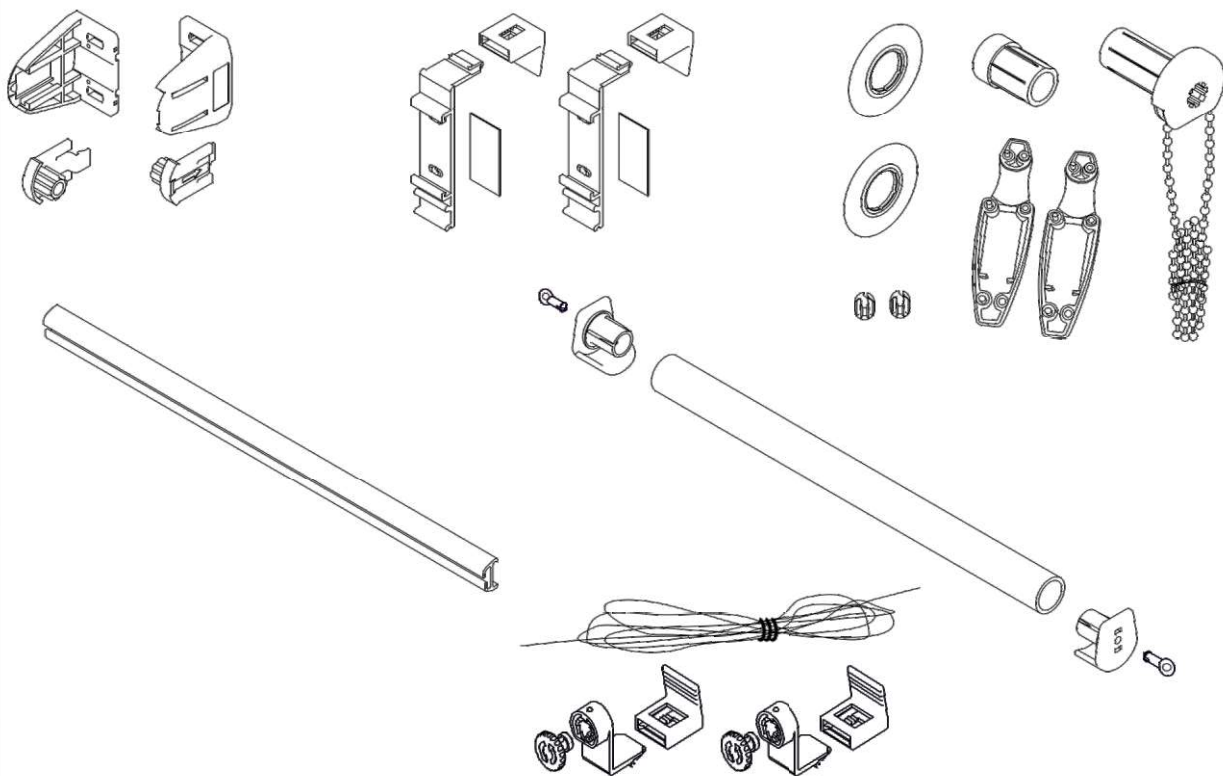


The set includes the following Day and Night roller blind fitting elements:

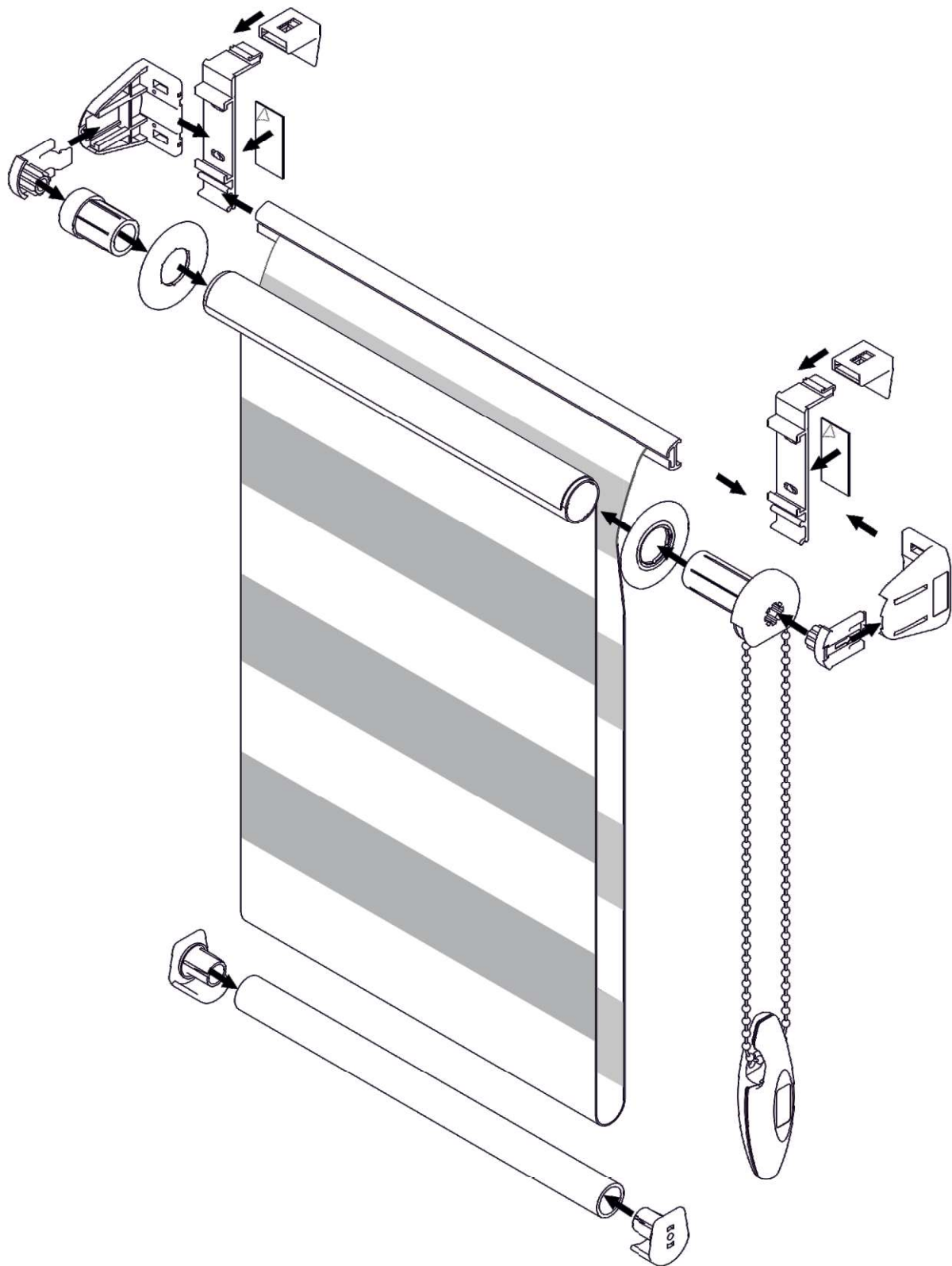
**Variant I - roller blind without lateral guidance**



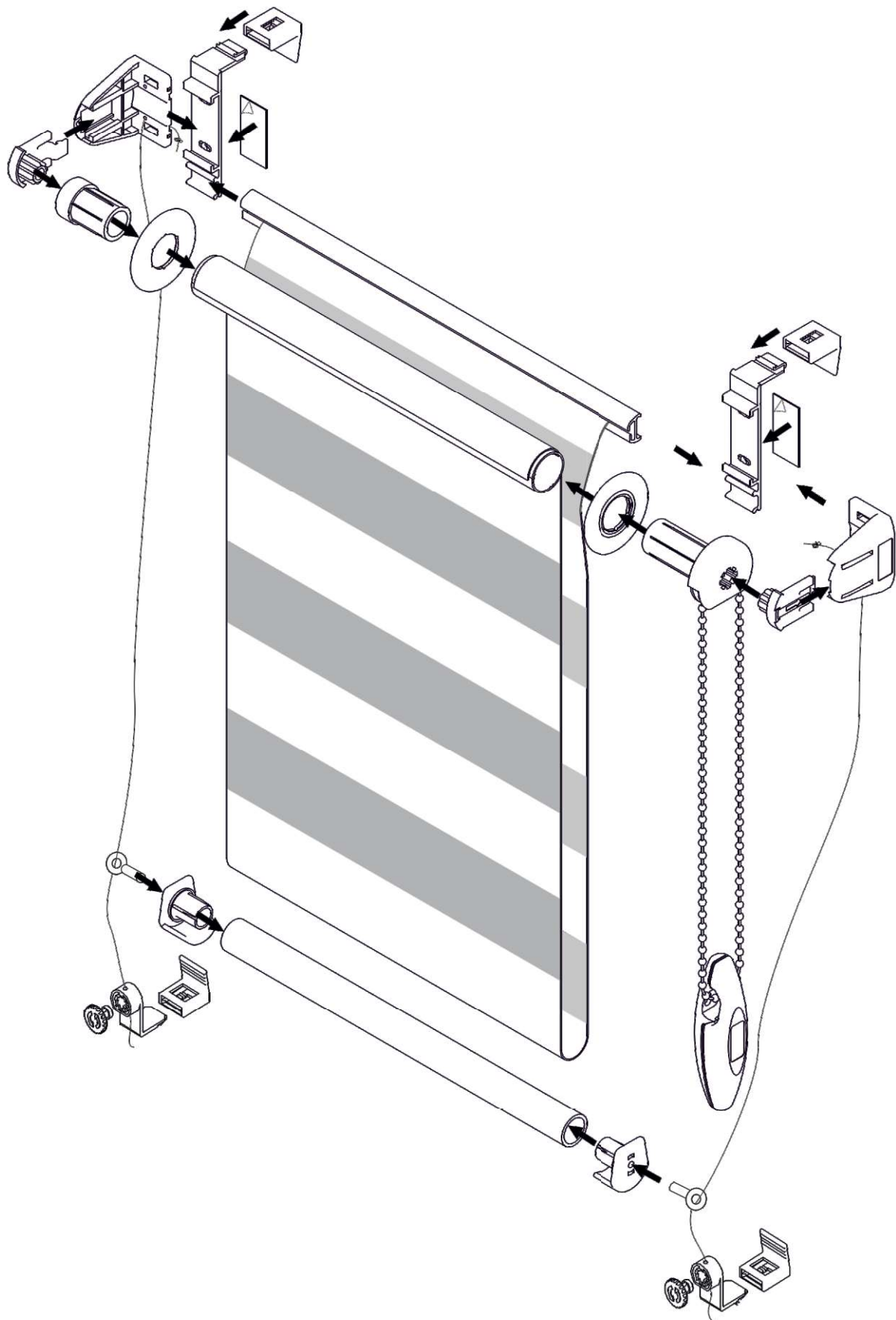
**Variant II - roller blind with lateral guiding (with strings)**



Assembly instruction for Night and Day roller blind,  
option 1 - without lateral guidance



Assembly instruction for Night and Day roller blind,  
option 2 - with lateral guidance (with strings)



Hang the Night and Day roller blind on the window frame, put the locks on the chain.

With option 2; tighten the strings with the knob

