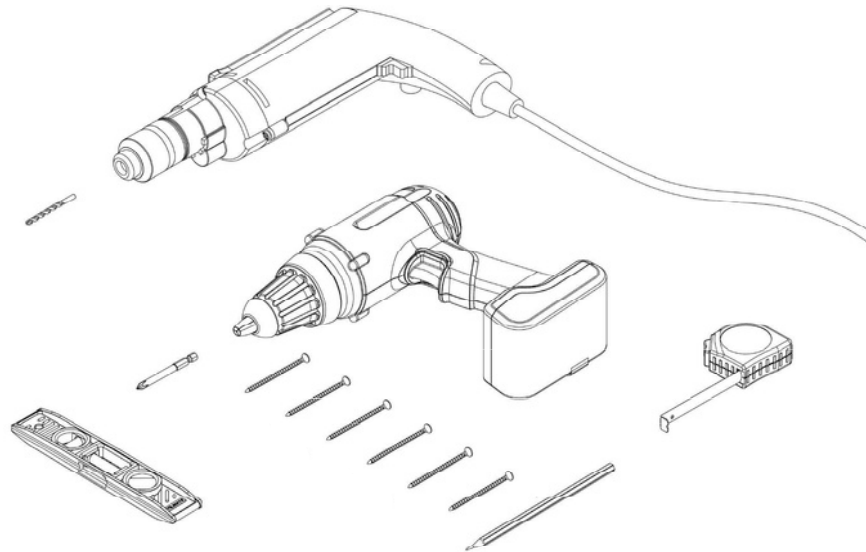


Installation instructions for Screen Blind. Mounted on the window frame, from external side.



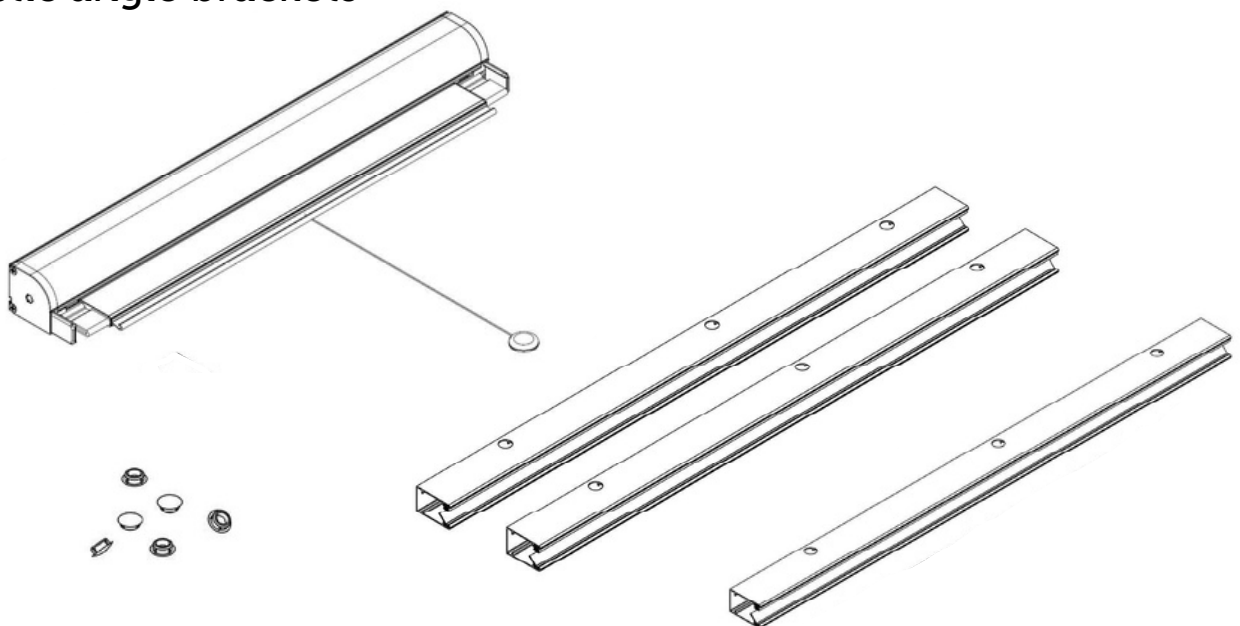
The tools and screws shown in the figure will be required for installation.

The kit does not contain any screws, because the selection is customer-specific and depends on the material used for the window joinery.



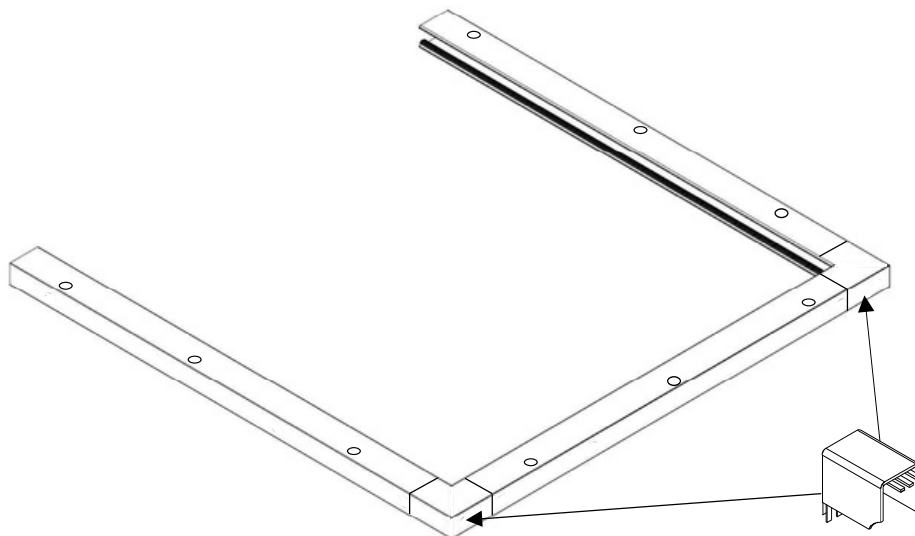
This pack contains:

1. Cassette with Screen Blind fabric
2. Side guides
3. Lower profile
4. Plugs
5. Plastic angle brackets



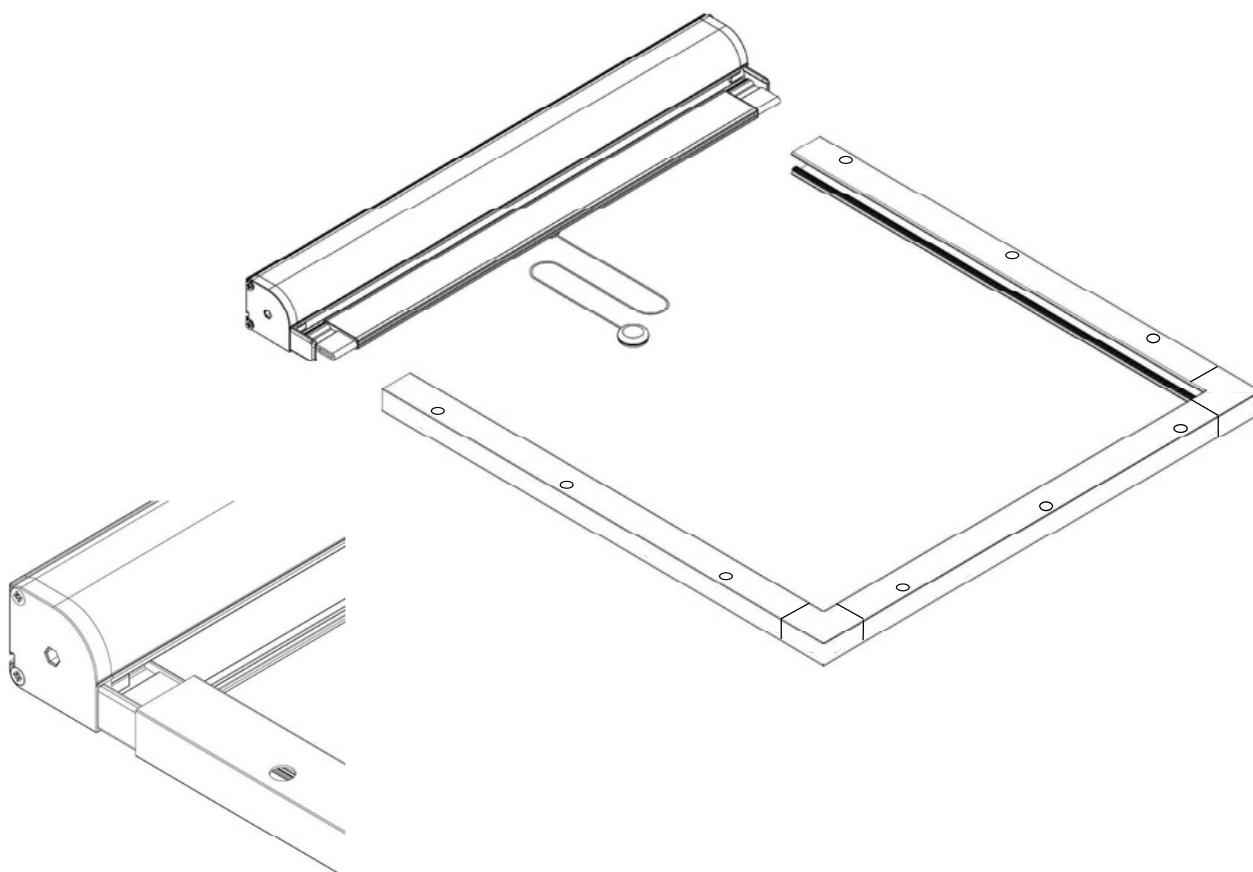
Step I

Connect the side guides to the lower profile using angle brackets.



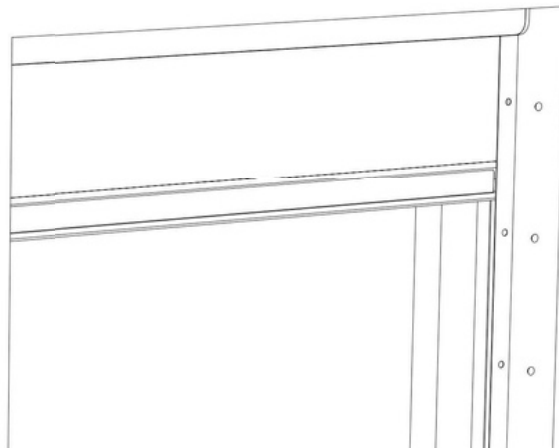
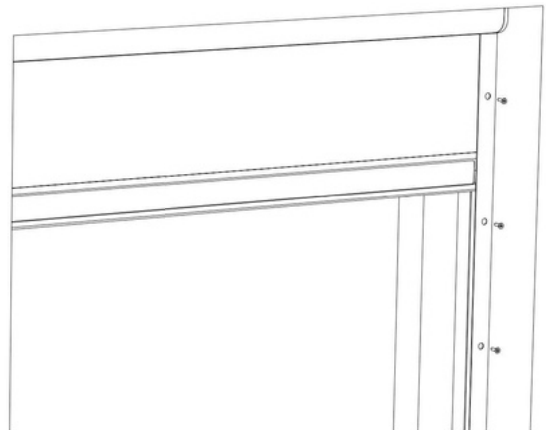
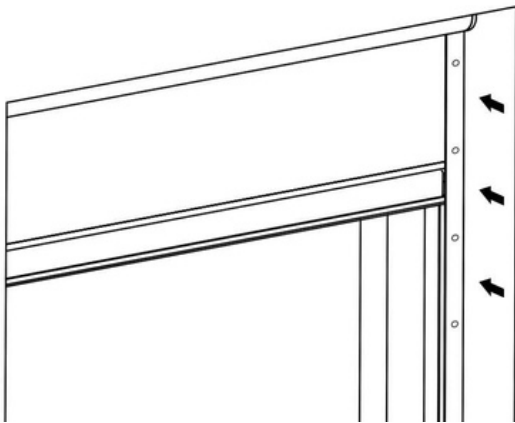
Step II

Push the left and right side guides onto the blind stem as shown below.



Step III

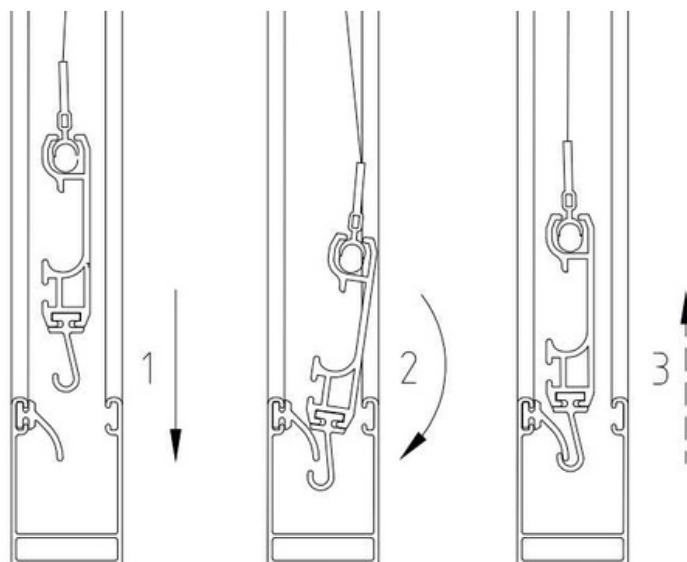
Mark the installation location and mount the blind horizontally and vertically. After installation, insert the plugs.



Step IV

Closing and opening the Screen blind.

Closing the Screen blind involves sliding the bottom slat to the lower position and hooking the hook catch into the bottom profile.



Opening the Screen Blind involves bending the hook catch and unhooking it from the bottom profile.

