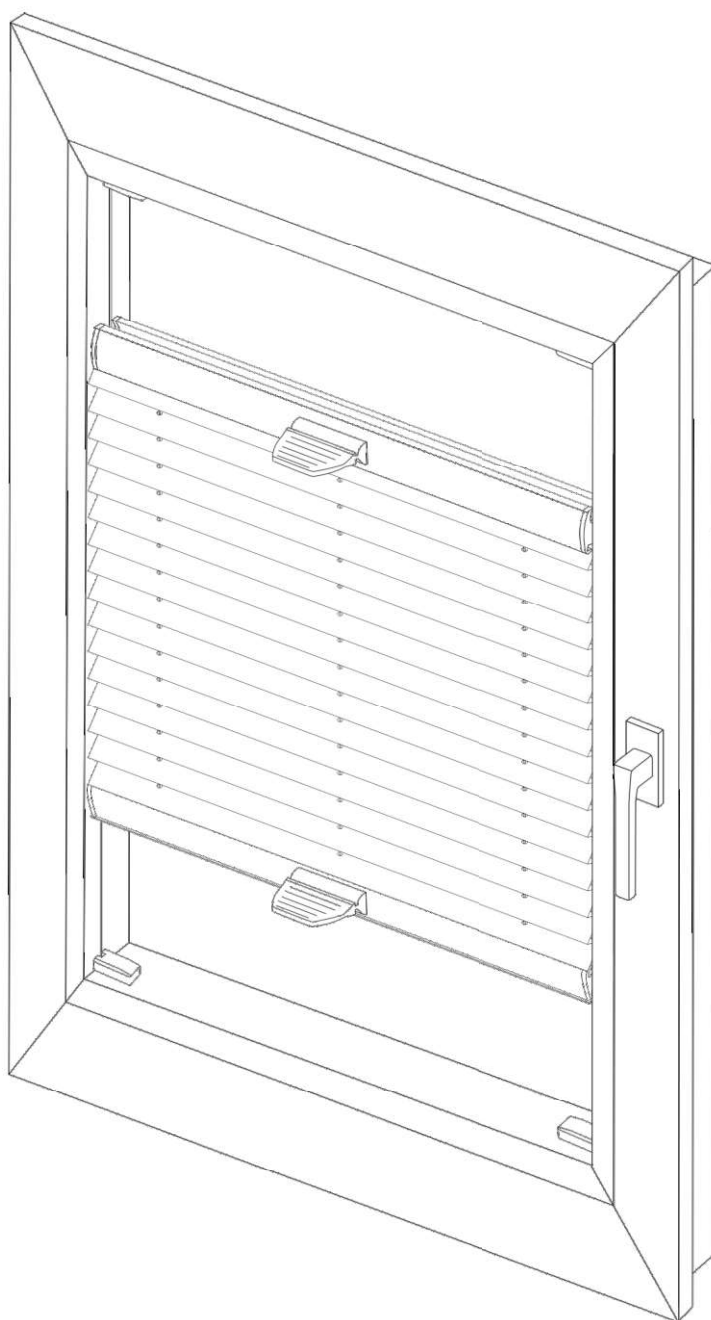
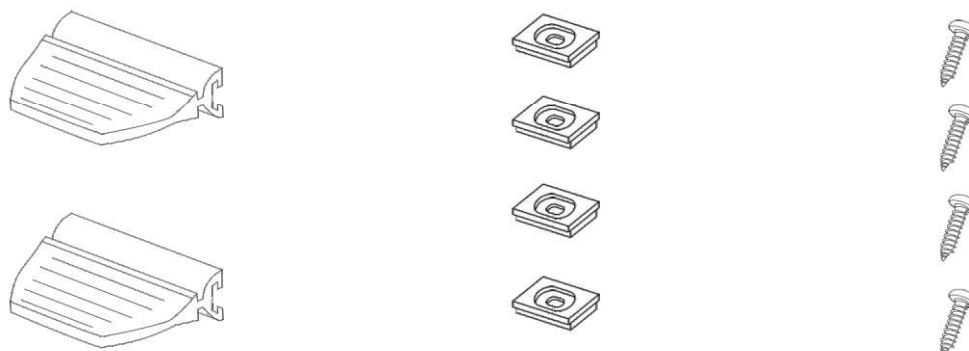


# Assembly instructions for pleated window blinds mounted in the window recess

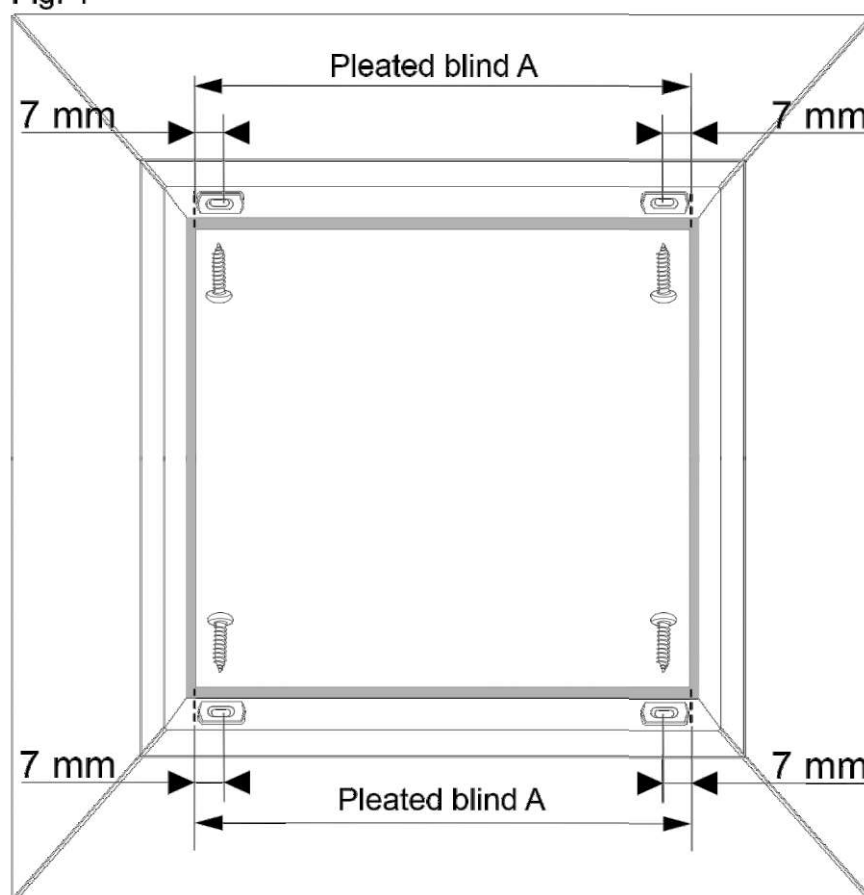


The pleated window blind is supplied with the following fitting elements:



Stage I.  
Screw the mounting elements. Fig 1

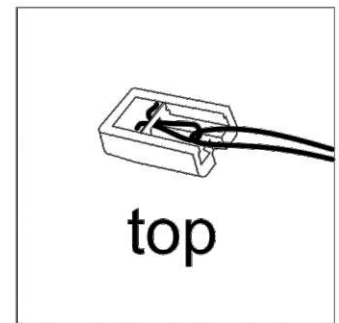
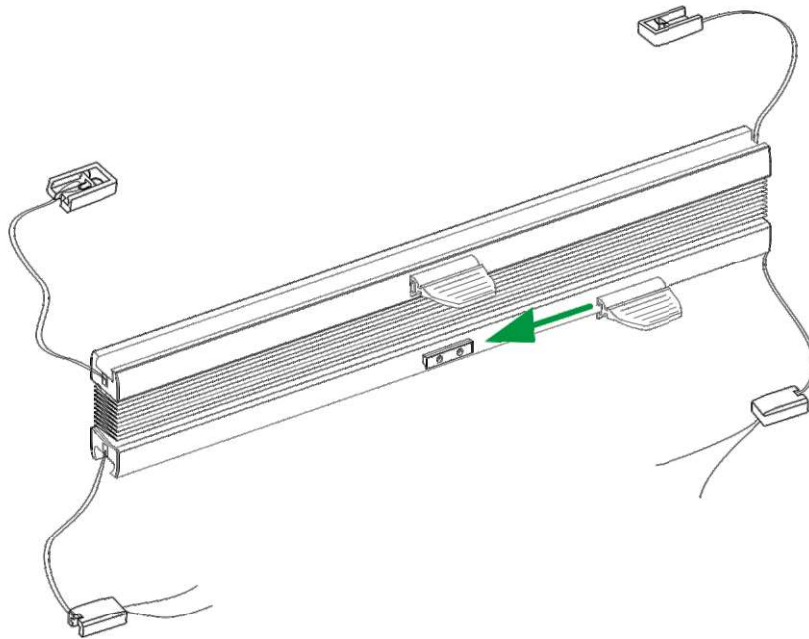
Fig. 1



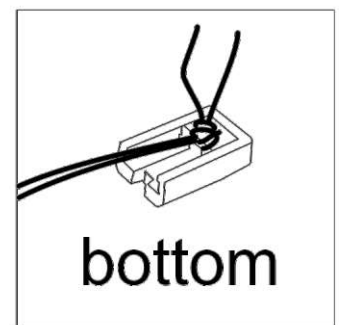
## Stage II

### Prepare the blind for installation. Fig. 2

Fig. 2



top

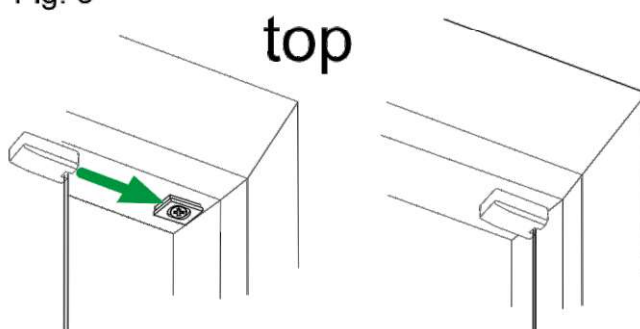


bottom

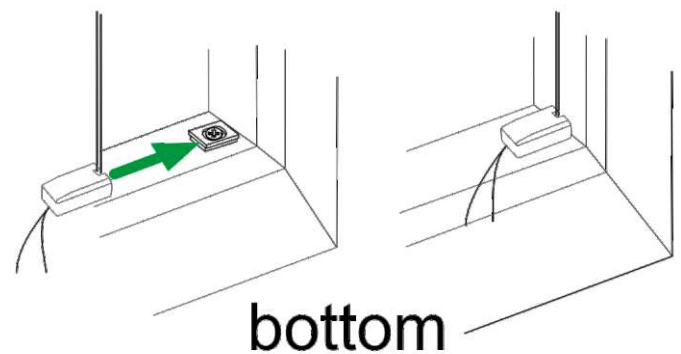
## Stage III

### Start installing the pleated blind from the top. Connect the mounting elements. Fig. 3

Fig. 3



top



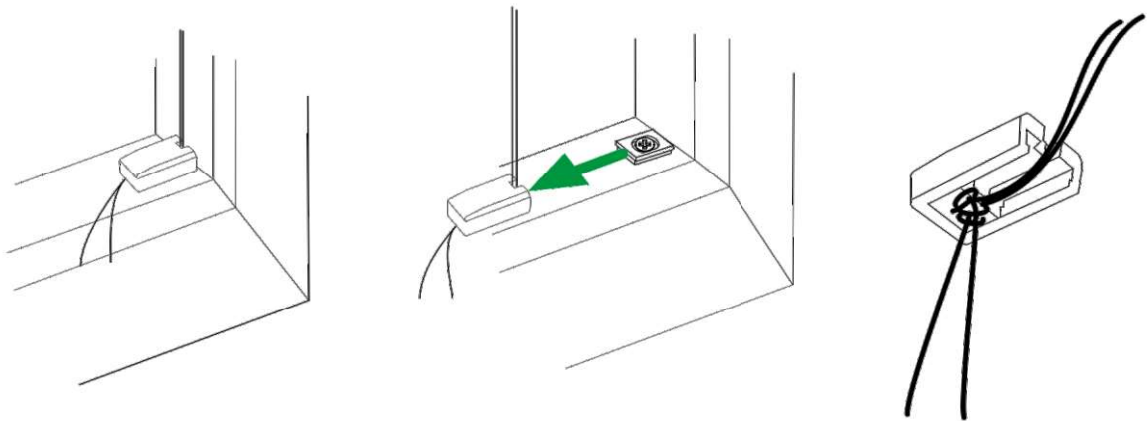
bottom

## Stage IV

Adjust the string tension. Fig. 4

1. If the pleated blind drops automatically, increase the tension of the string. To do this, change the position of the knots on the strings. Use the same value on the left and the right string.
2. If the pleated blind operates with a lot of resistance, reduce the string tension.

Fig. 4



## Stage V.

Cut off excessive amount of strings. Fig. 5

Fig. 5

