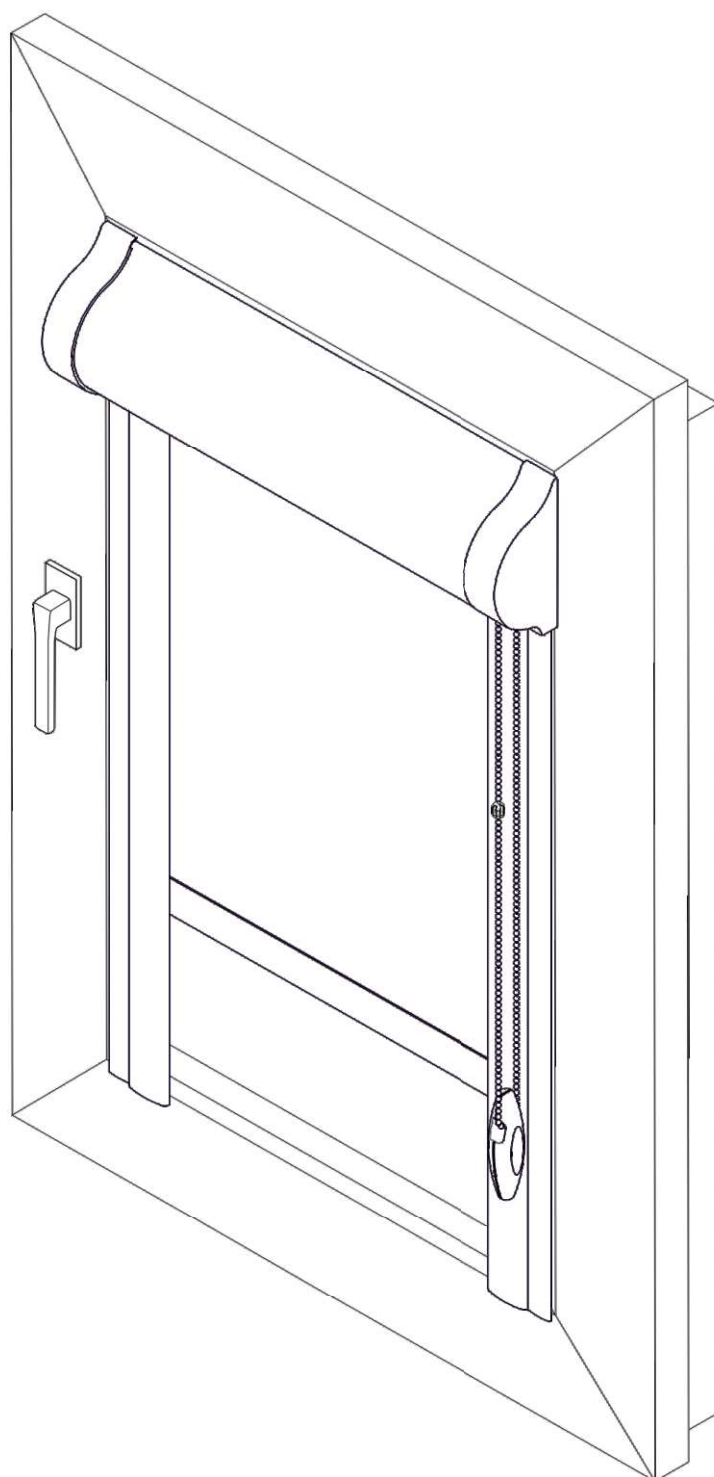
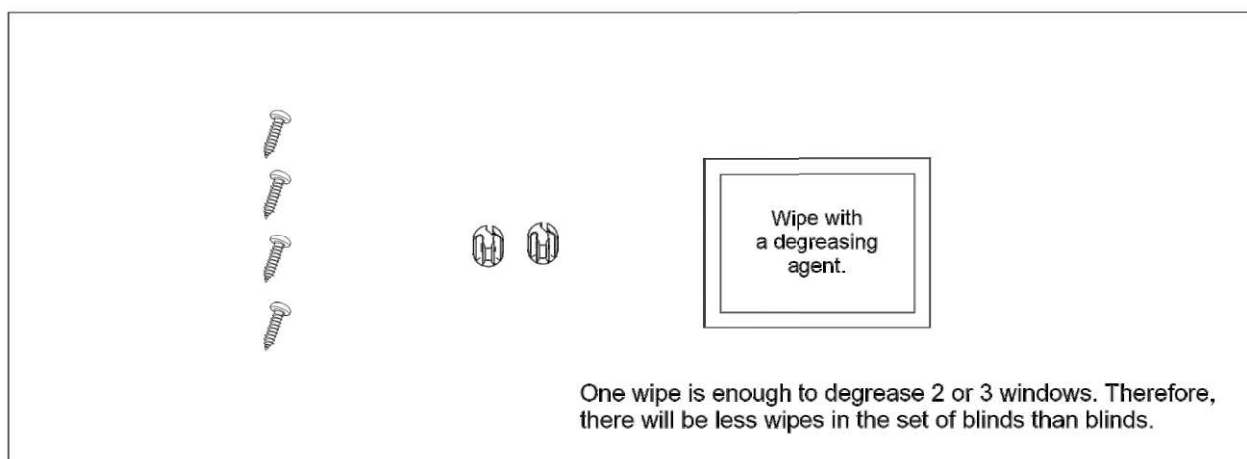


## **Installation instruction for fabric roller blind in aluminum cassette , mounted on a window frame.**

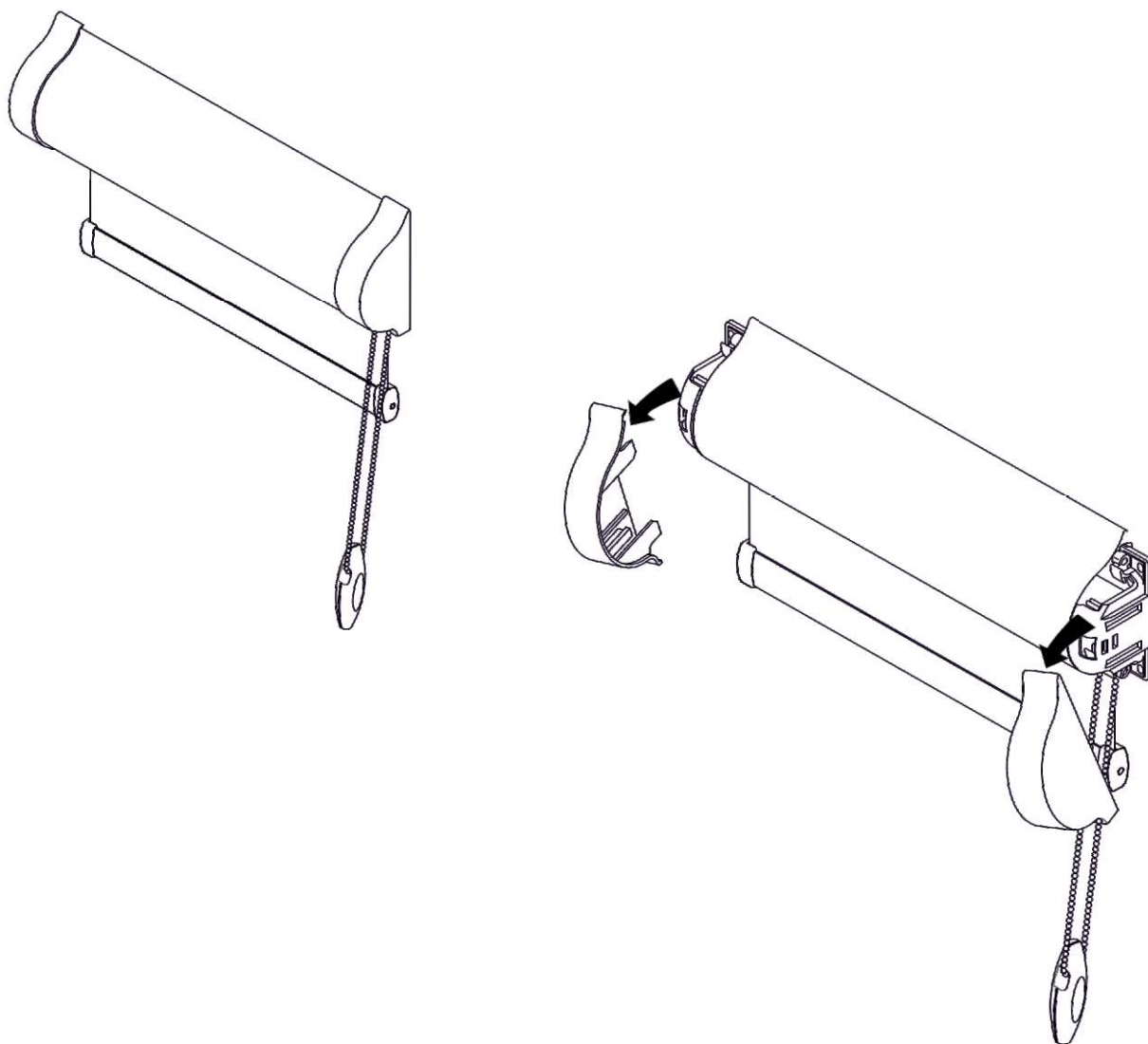


The following mounting elements are included with the roller blind.



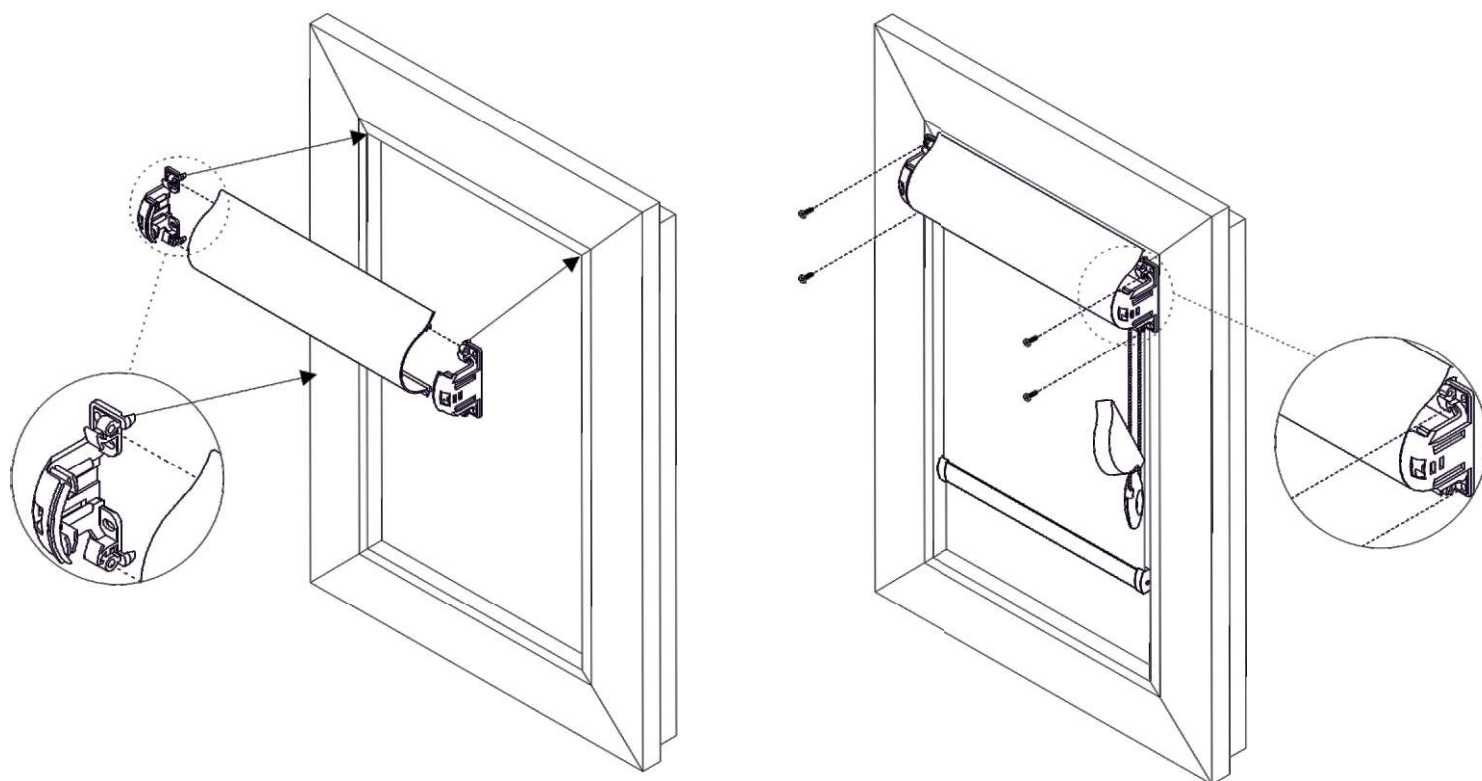
### Step I

Unpack the blind and take off plastic covers according to below illustration.



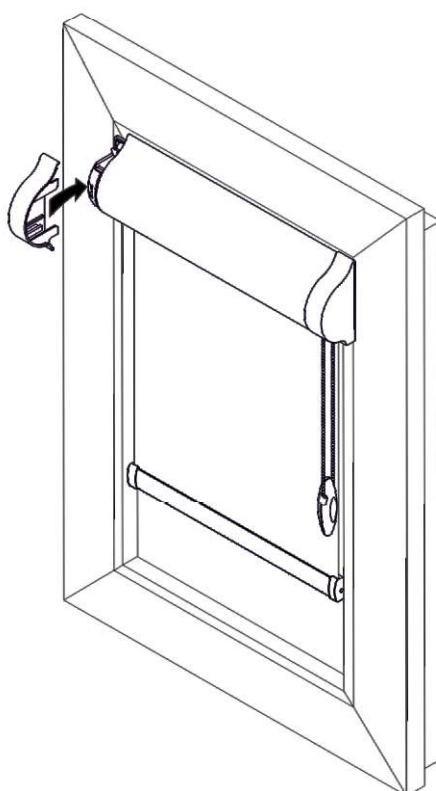
## Step II

The blind cassette has elements that set the positions of the blind for assembly. Set the roller blind as shown in the picture and fix it with screws.



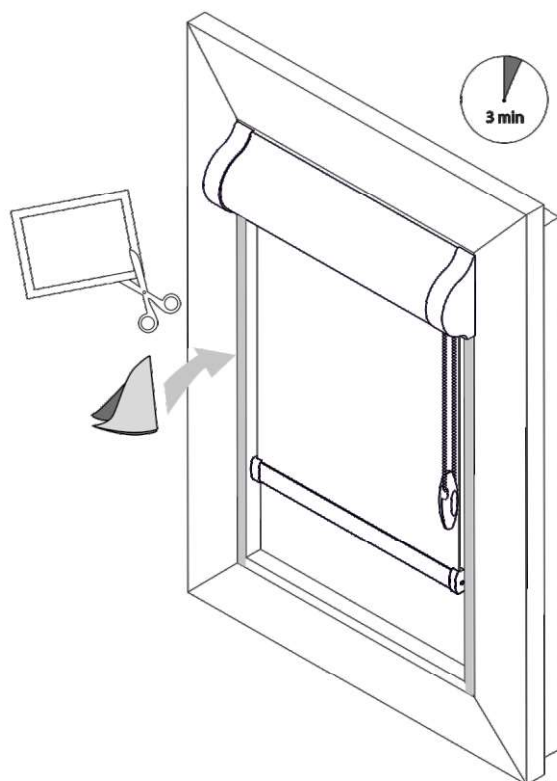
## Step III

Put on the plastic covers.



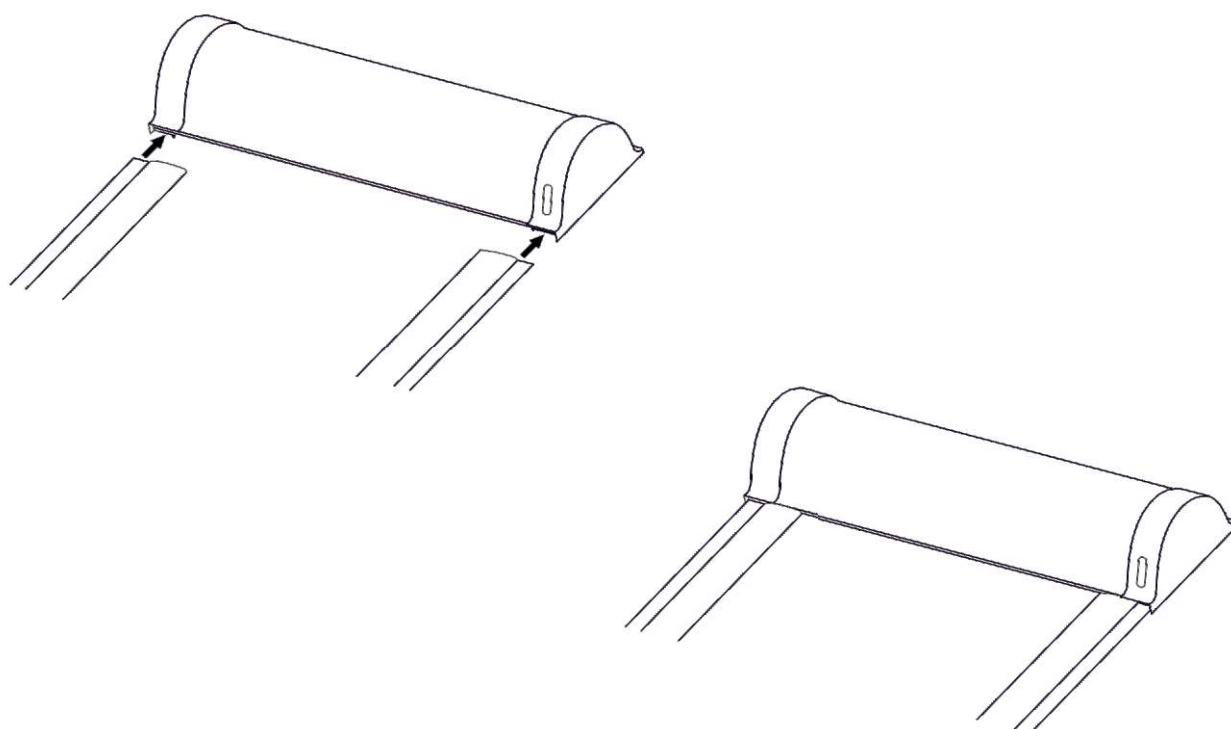
#### Step IV

Use the supplied tissue to clean the surfaces where the guides will be attached. Wait 3 minutes for the degreasing agent to evaporate.



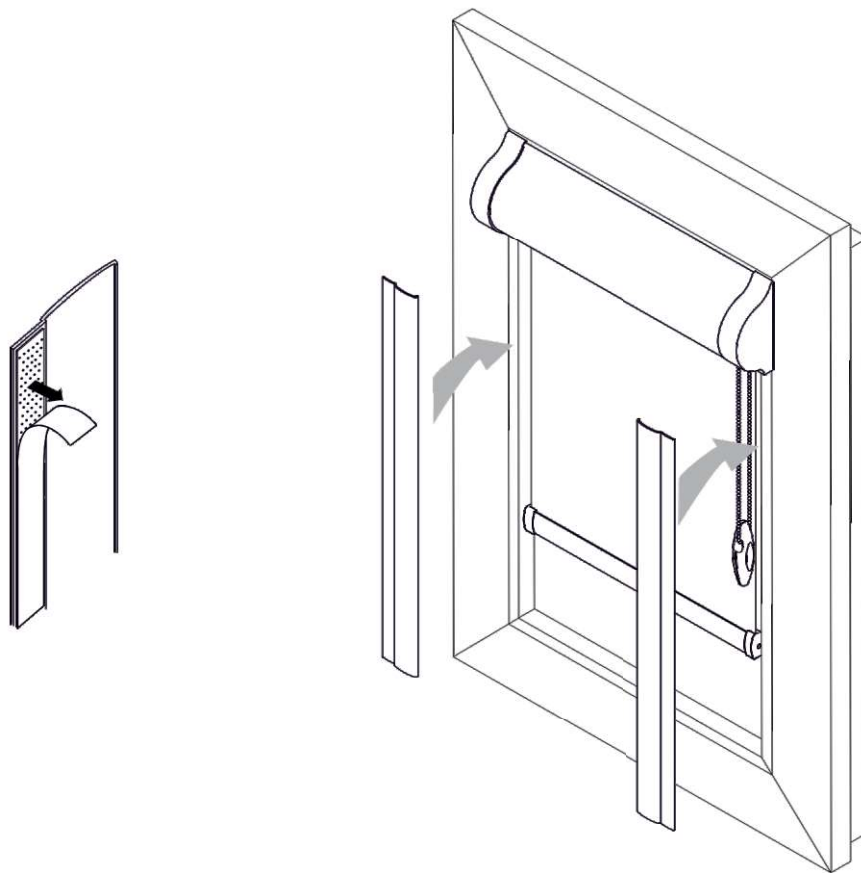
#### Step V

Try on the cassette guides. They must be glued in the position shown in the illustration below.



### Step VI

Remove the protective film from the guides and stick them on.



### Step VII

Put the roller blinds position limiters on the operating chain.

