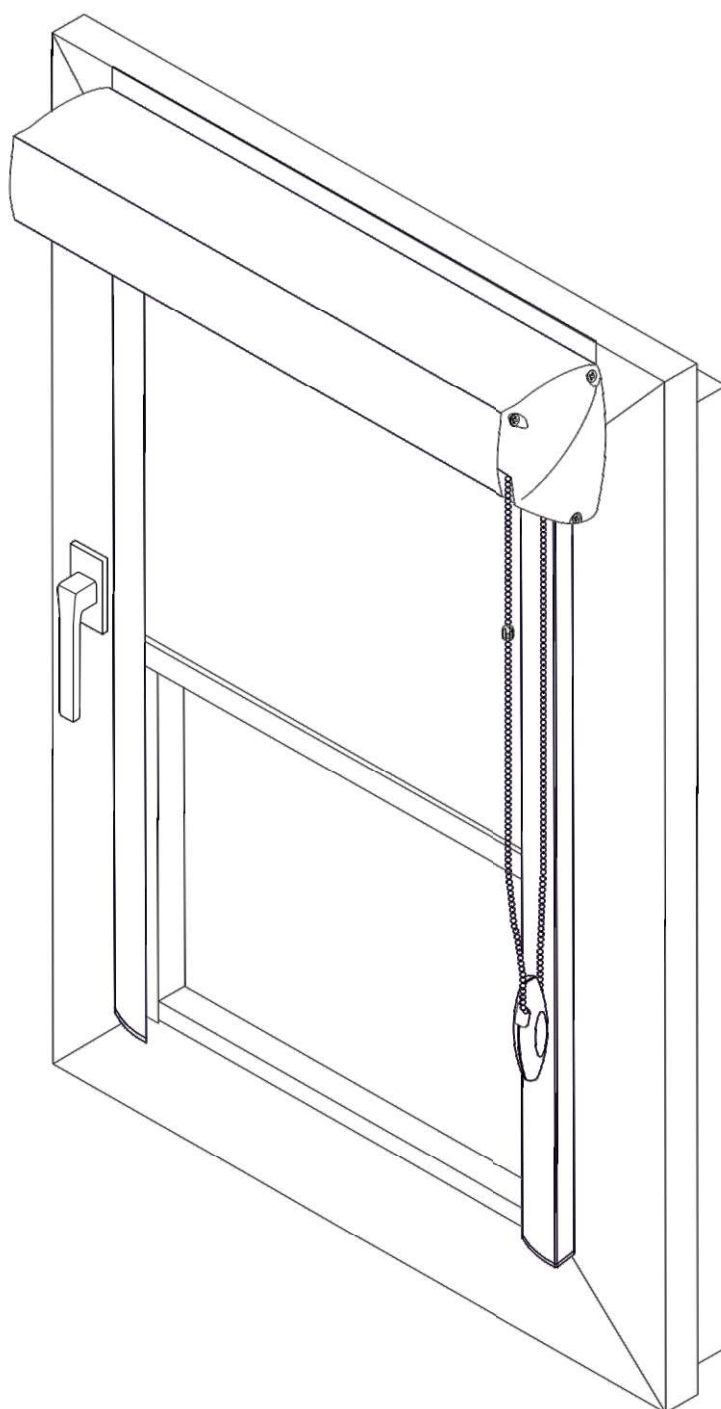
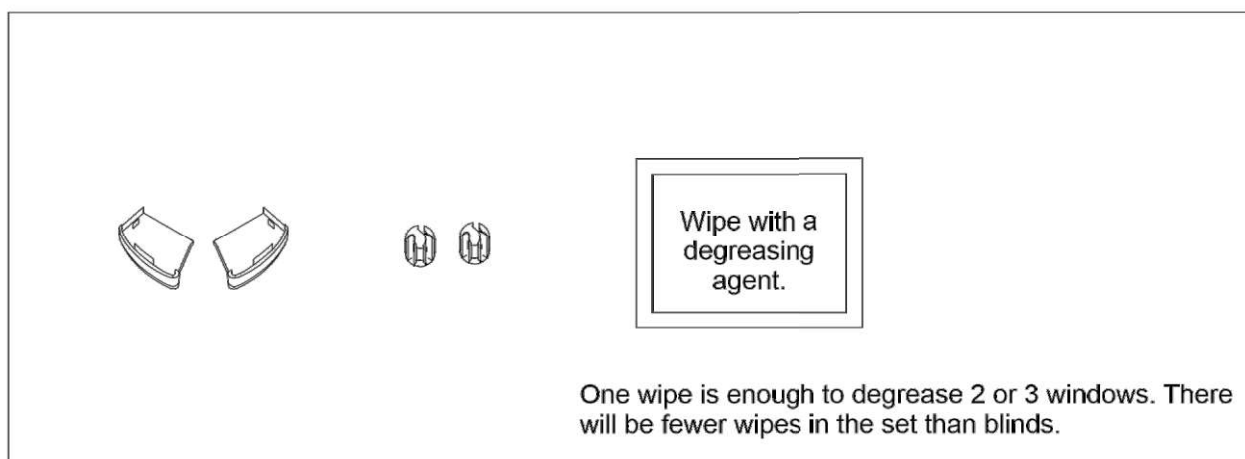


## **Assembly instructions for fabric roller blinds in a PVC cassette mounted on the window frame**

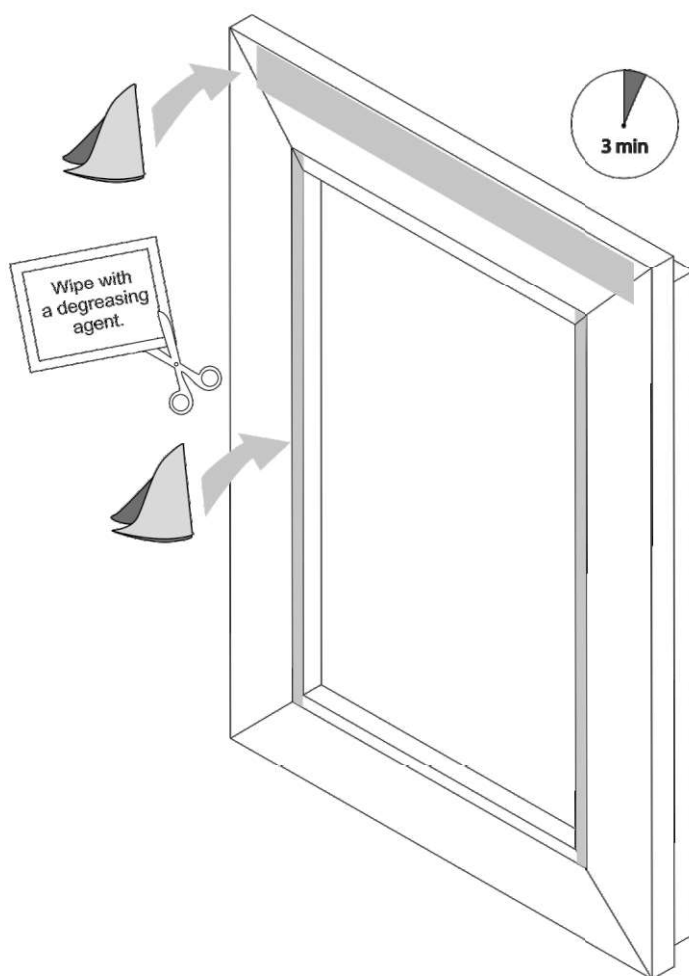


The set includes the following mounting elements:



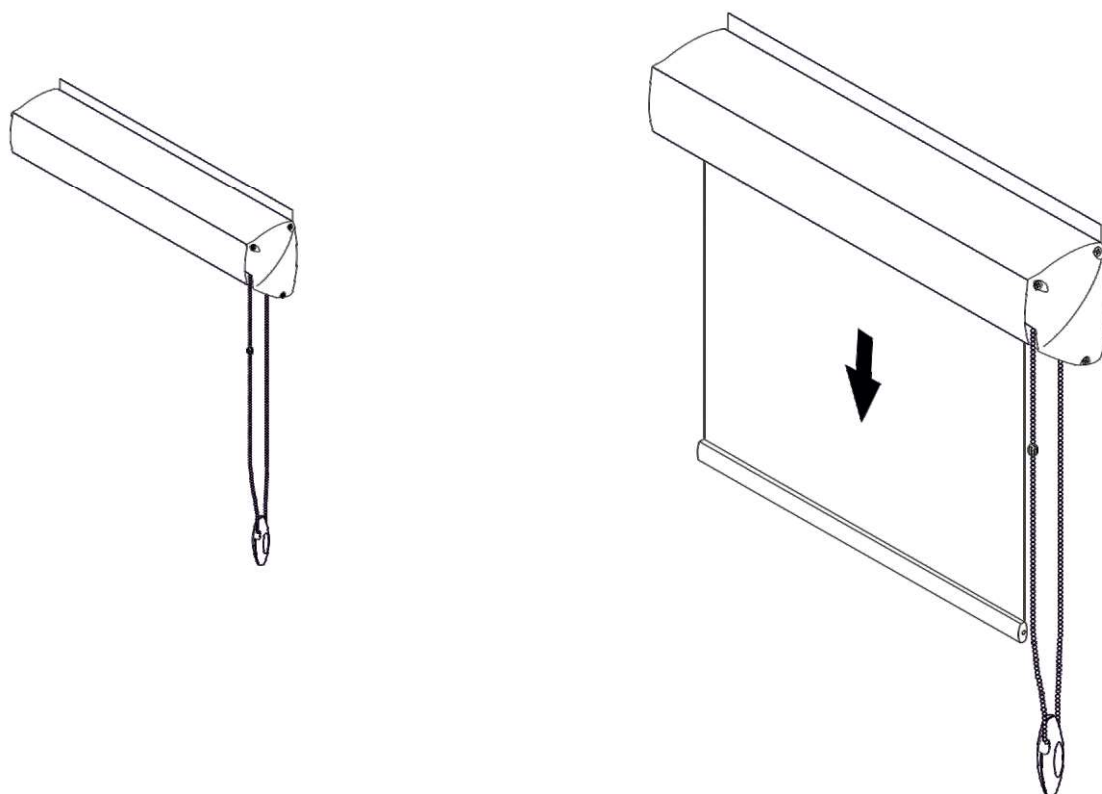
### Stage I

Using the supplied wipe, clean the surface to which the guides and roller blind PVC cassette will be fixed. Wait 3 minutes for the agent to evaporate.



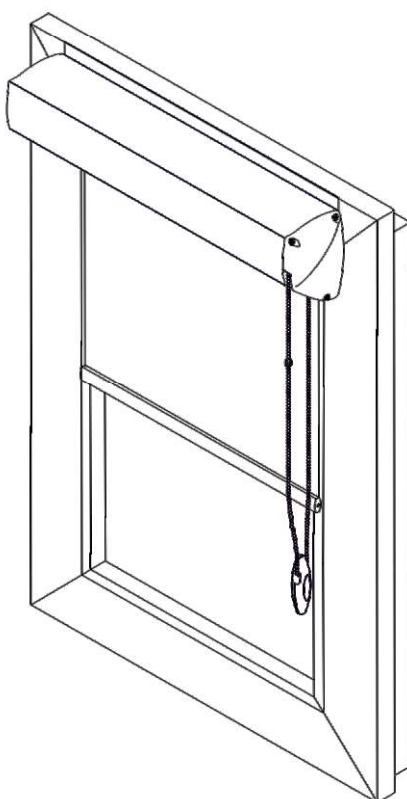
## Stage II

Unpack the blind and slightly unfold the fabric. Warning! Do not peel off the adhesive tape, yet.



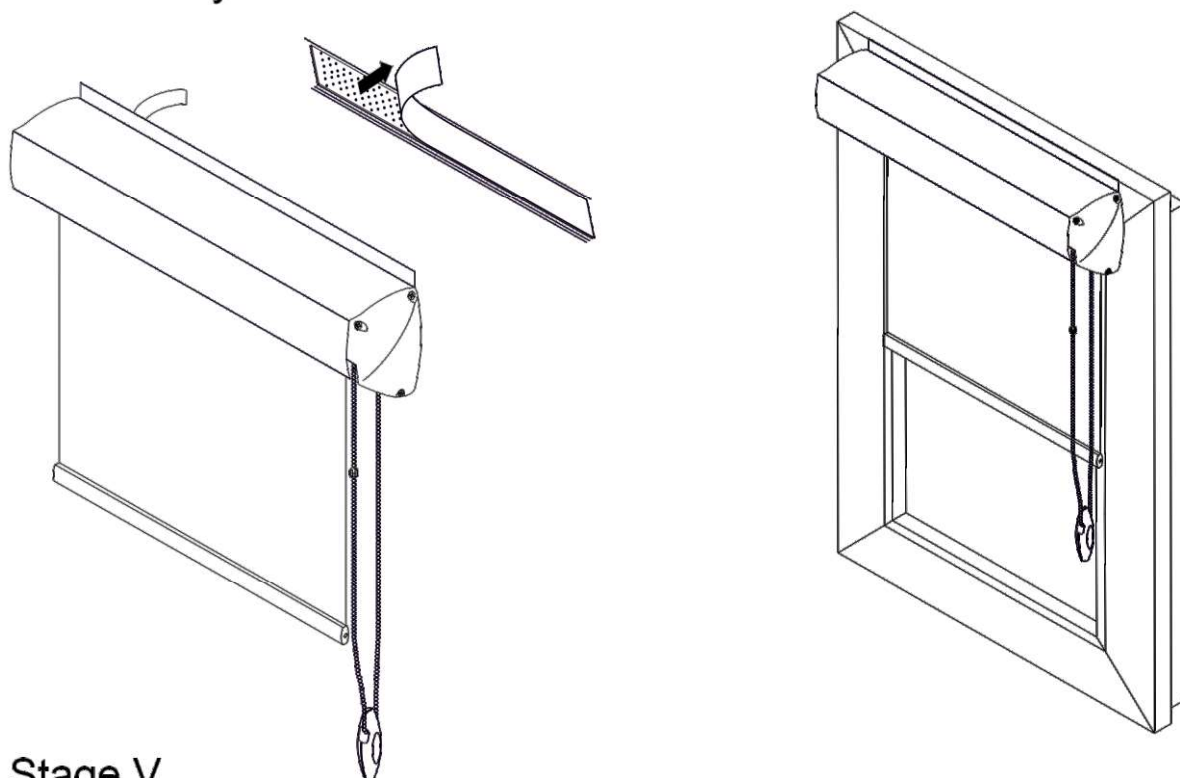
## Stage III

Place the blind cassette precisely in the centre. The fabric has to overlap the left and right sides identically.



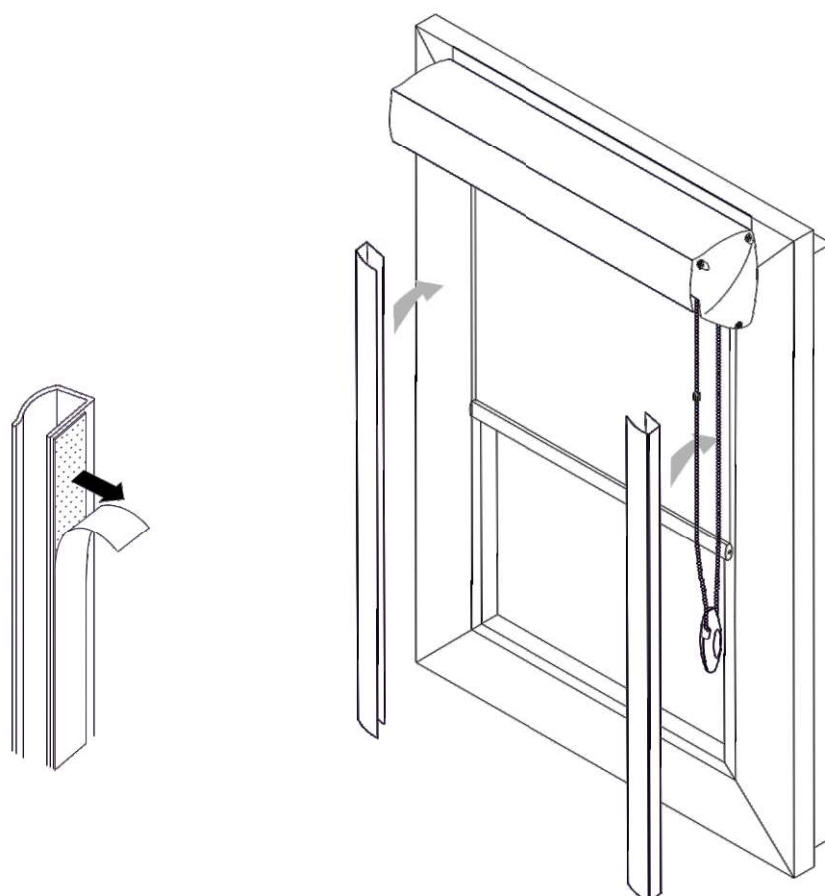
#### Stage IV

Remove the adhesive protecting tape and glue the upper PVC cassette evenly with the top edge of the window sash. Press firmly.



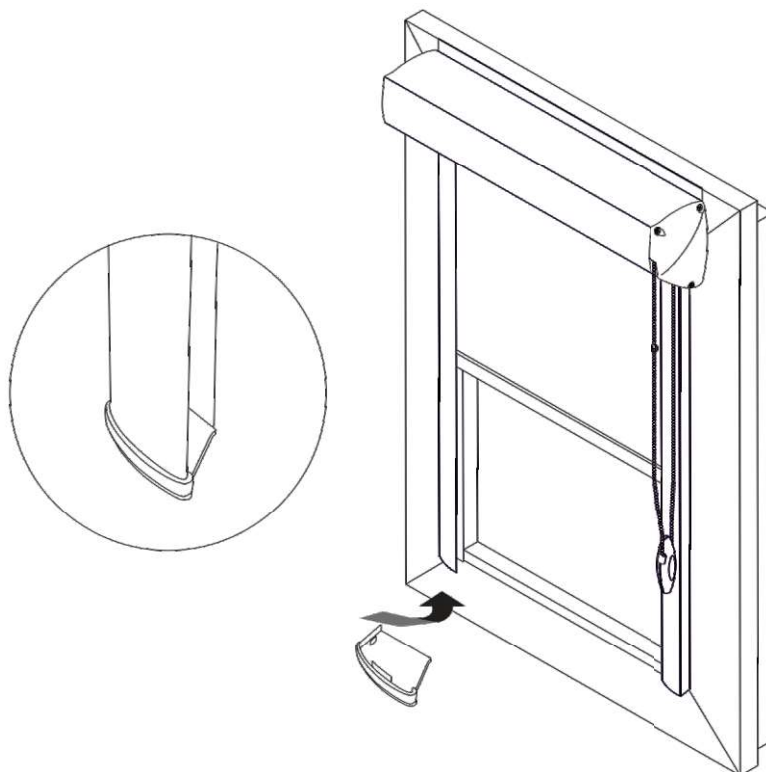
#### Stage V

Remove the protective tape from the guides and stick them to the glazing bead.



### Stage VI

Press the caps into the bottom of the end. This is optional and you do not need to install it. The choice is yours.



### Stage VII

Put the roller blind limiters on the operating chain.

